

DSF GROSS POLLUTANT TRAP PRODUCT BROCHURE



CLEVERTEK

FUNCTIONALITY & FEATURES

- Floatable litter is contained and separated in the outer chamber, reducing the risk of filter screen blockage,
- Large storage volume for oils and other floatable pollutants,
- Greater storage volume for gross pollutants than any other GPT on the market, which results in less frequent maintenance and cleaning out,
- Reduced velocities in unit promote greater settlement of sediments,
- Specially designed filter unit, which has a large surface area for a relatively small diameter unit (removable from surface, no confined space entry required),
- No moving parts, which reduces chance of function failure,
- Only GPT where majority of pollutants are stored away from the filter unit,
- Easy clean-out process due to ease of access and filter unit removal,
- 316 stainless steel (SS) Filter Unit,
- Precast-concrete housing structure,
- Easy installation using a precast concrete drop in method,
- Gravity Assisted Filtration,
- Dragon Scale Filtration Technology,
- Easily inspected Filter Unit (from the surface) due to access areas.
- Optional jet cleaning installation for maintenance

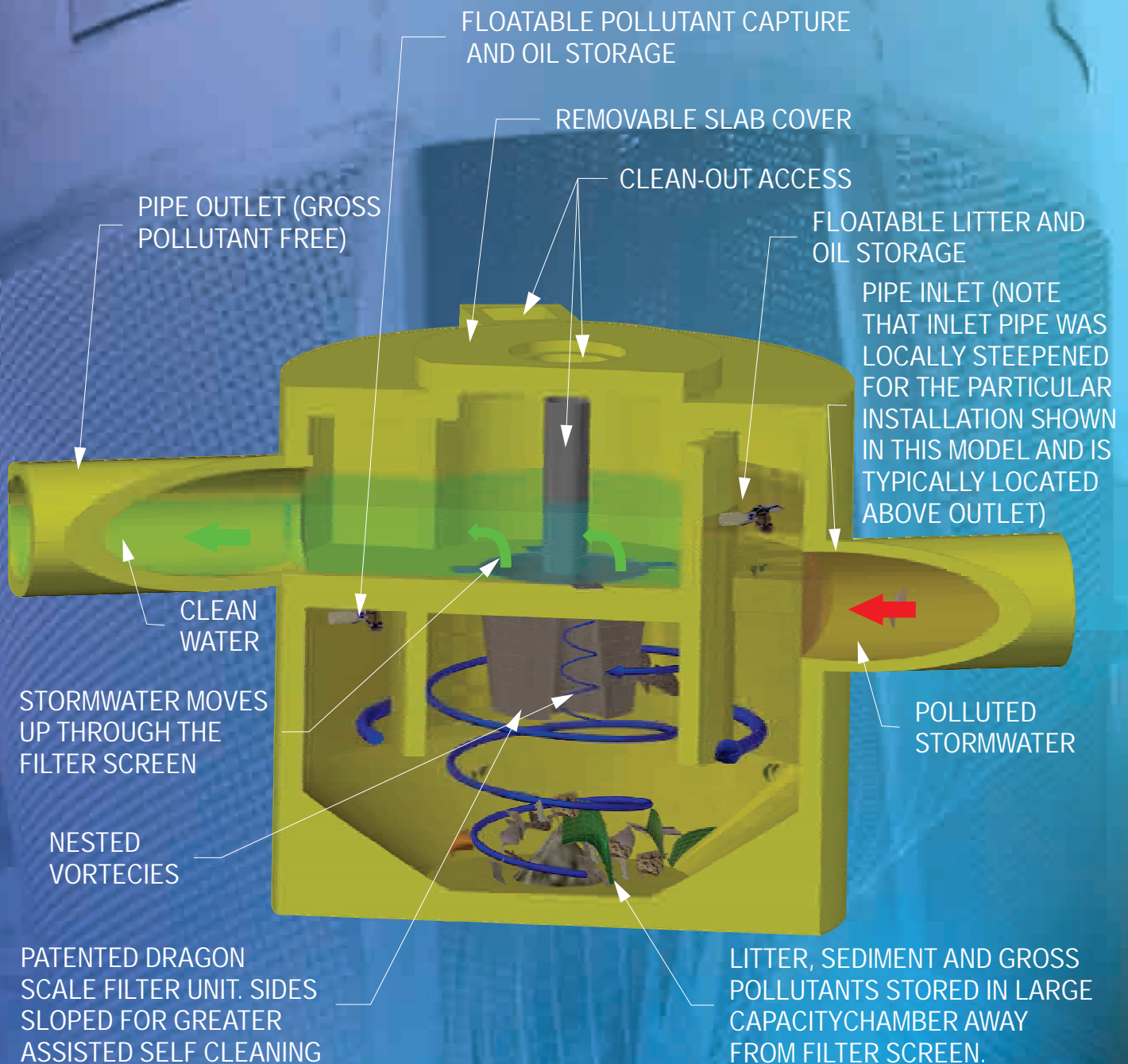


DFS GPT Installation



Filter Unit

FUNCTIONALITY & FEATURES



DESIGN

- Can treat flows from 50 L/s to 5000 L/s,
- Encourages trapping of sediments, litter and oil,
- Long lasting (50 years +) due to quality stainless steel and 50MPa concrete components,
- Internal (Nested) vortices achieve high surface area for a given diameter,
- Surface topography driven turbulence, the 'Dragon Scale' orifice results in a surface with a large number of small lumps with adjacent surface penetrations. This surface roughness causes a higher number of minute eddies in the passing flow,
- Low contact area for pollutants - reducing the likelihood of adhesion to the screen and blocking,
- The dragon scale orifice formation facilitates highly effective water jet cleaning from the clean water side of filter unit,
- Optional automation and remote control of self flushing using built in deluge system,
- Option of remote monitoring of system.



Dragon Scale Filter Material



Laboratory Testing

INSTALLATION

- Custom designed to fit virtually any situation,
- Simple drop in method for the concrete components and filter unit,
- Unit components can be delivered to site,
- Clevertek offer both a supervision service to contractors as well as a full installation service,



Delivery to Site



Contractor Instruction and Supervision



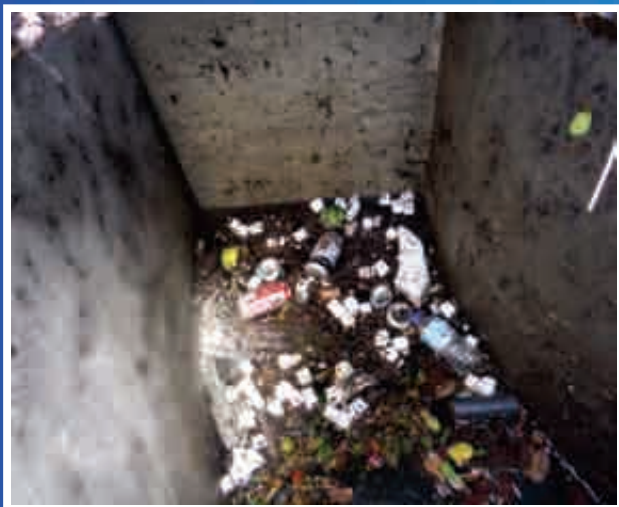
Drop in Components



Easy Fit Components

MAINTENANCE

- Access points to inner chamber, filter unit and outer chamber,
- Litter and debris can be readily accessed and removed via vacuum truck or alternate method,
- Concrete and stainless steel parts will not corrode or break down,
- Parts can be easily installed if they require replacement,
- Easily removal of filter unit allows complete access to the bottom of the pollutant storage chamber,
- The interior of the GPT, including the filter unit is completely accessible and completely visible,
- The GPT can be isolated to prevent water from entering during the time of maintenance.



Floatable Litter in Outside Chamber



Access Points

ABOUT CLEVERTEK

The senior design engineers at Clevertek, boast over 25 years experience in the stormwater quality and stormwater management industry. The inspiration to design effective gross pollutant traps (GPT's) stemmed from the inadequacy of most GPT's in the market during that time. Through the use and experience of working with GPT's, the engineers at Clevertek noticed that nearly all models available contained similar flaws in their design and subsequent function. Clevertek GPT's all adhere to key principles that directly resolve the issues associated with these other models. Clevertek GPT's are all assisted by gravity due to their orientation so that litter and gross pollutants do not directly sit on screening mechanisms, which dramatically reduces blockages. The Echidna model also makes use of LOR's whereas the DSF model makes use of nested vortices and a patented dragon scale filter. We believe that this new way of looking at GPT design will create a paradigm shift in the stormwater industry.

For similar reasons, Clevertek have recently expanded their product range to include other products within the broader water engineering industry other than GPT's.

Clevertek products currently available to the market are:

- Echidna CLT-002C Gross Pollutant Trap,
- DSF CLT-004P Gross Pollutant Trap,
- Emu CPFV-001 Pipe Face Valve,
- CFG-001 CFG-001 Flood Gate.

Additional Clevertek design services include:

- Catchment and flow calculations
- Pollutant loads from stormwater capture

Address: 5 Oak Hill Court, Berwick.

Phone: (+613) 8790 1744

Email: admin@clevertek.com.au

The background is a solid blue gradient. In the lower right, there is a faint, semi-transparent wireframe sphere, similar to a geodesic dome or a molecular model, rendered in a lighter shade of blue.

CLEVERTEK

www.clevertek.com.au